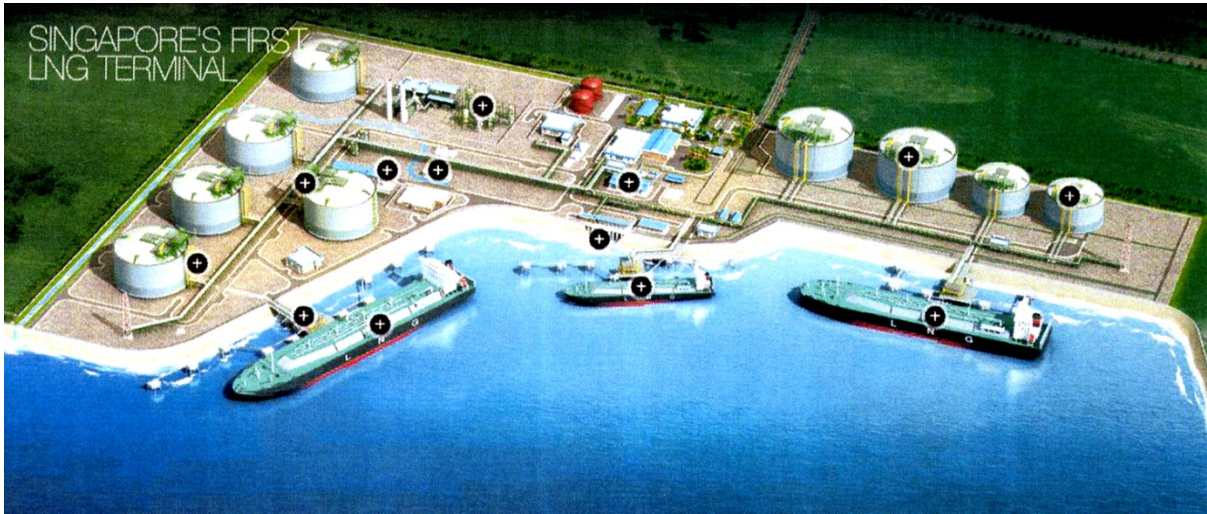


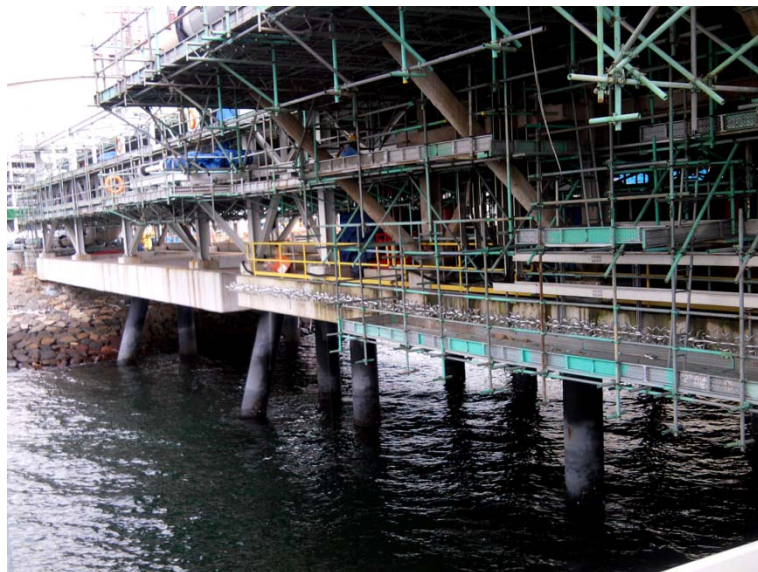
## Singapore Liquefied Natural Gas – Security Project Case Study



When Insight was approached to provide a security solution for use within a major new Liquefied Natural Gas facility in Singapore, it was obvious that it would be essential to the success of the project, that the Insight team and the customer project team would need to work very closely given the 10,000 kilometre physical separation between the teams and the different time zones in which they were operating.

The key focus of the project was to prevent unauthorised access to specified areas of the gas pipeline in the import / unloading area. Due to the marine environment of the dockside location, it was decided that the Vanguard rotating barrier manufactured from aluminium and custom designed stainless steel mounting brackets was the best solution on this occasion.

Although close to completion, the on-going construction work of the new LNG terminal determined that a multi-phase implementation of the security installation was required. Thanks to careful planning and the professionalism both the Insight and Customer teams, Phase 1 of the security project was successfully completed in December 2012, with the next phase scheduled for completion during January 2013.



Find out more about Insight Security Anti Intruder Systems at; <http://www.insight-security.com/perimeter.htm>